

# VT053

3<sup>rd</sup> Generation

ATCA Shelf Manager

VT053

## Key Features

- Compliant to PICMG 3.0 base specifications
- 10/100 out-of-band, and RS-232 de-bug ports via RJ-45
- Software for Sensor Data Record, event logs, FRU inventory monitoring temp and power, e-keying, alarms and more
- Telco alarm with Micro DB15 connector front panel interface
- Active/standby redundancy when utilizing two VT053 in a system

## Benefits

- Incorporates VadaTech's 3rd generation shelf manager with HTTP, SNMP, HPI, RMCP, CLI and other software features
- Electrical, mechanical, software, and system-level expertise in house
- Full system supply from industry leader
- AS9100 and ISO9001 certified company

**Advanced TCA<sup>®</sup>**



**vadatech**  
THE POWER OF VISION



# VT053

The VT053 AdvancedTCA 3<sup>rd</sup> Generation Shelf Manager is designed for use with VadaTech VT831 or VT832 ATCA Chassis. The unit allows two slots in the system to be used as Nodes that would otherwise be allocated as dedicated switching hubs in the system.

Full redundancy and failover on both the Hub side and the Shelf Manager side can be achieved by using two VT053's in the system.

The VT053 can run as a protocol analyzer to monitor, inject, capture and validate I2C traffic on the Intelligent Platform Management Bus (IPMB). A Graphical User Interface (GUI) validates and displays the IPMB messages for injection into the shelf.

The VT053 is fully hot-swappable to minimize service downtime.

*Figure 1: VT053*

# Block Diagram

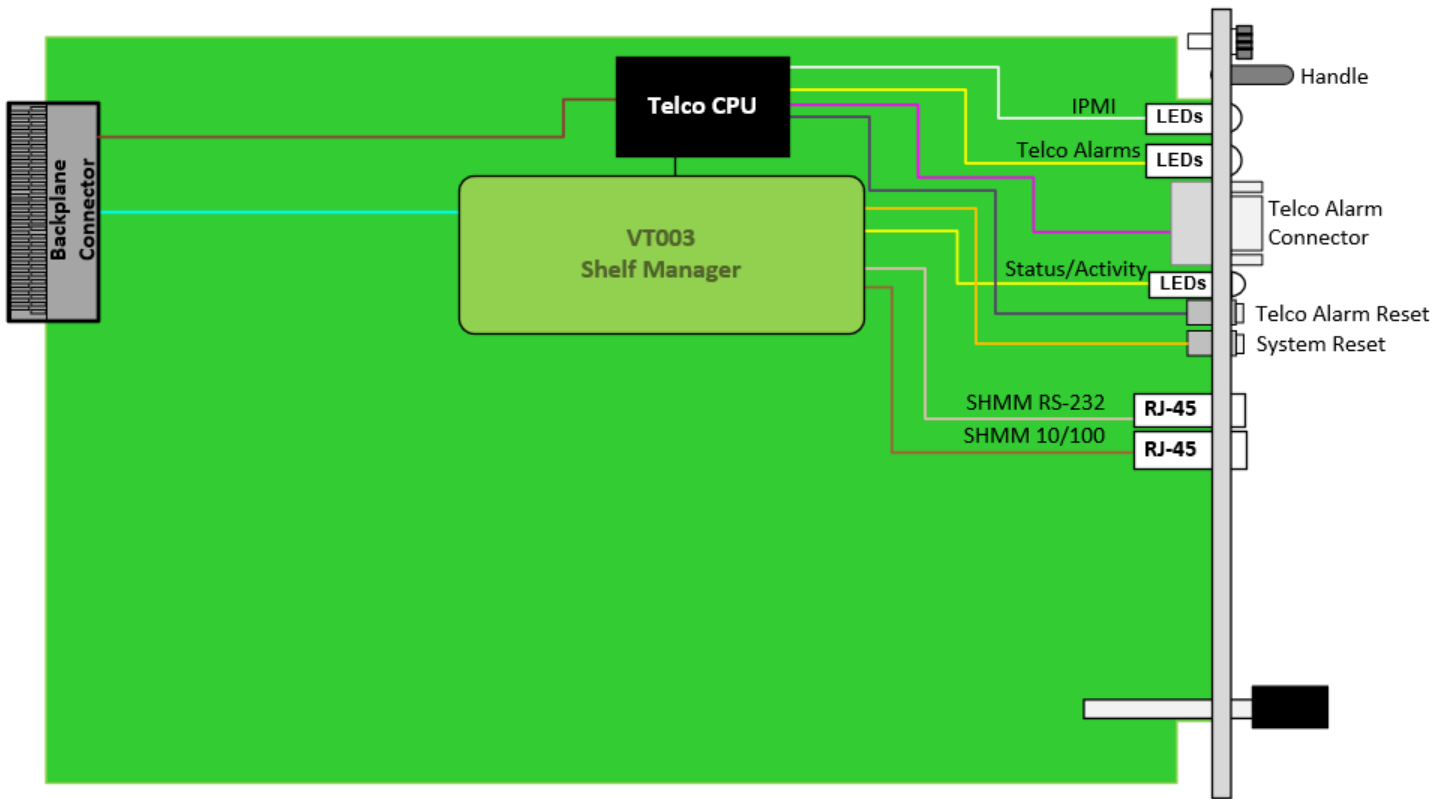


Figure 2: VT053 Functional Block Diagram

## Scorpionware™ Software

VadaTech's Scorpionware™ software can be used to access information about the current state of the Shelf or the Carrier, obtain information such as the FRU population, or monitor alarms, power management, current sensor values, and the overall health of the Shelf. The software GUI is very powerful, providing a Virtual Carrier and FRU construct for a simple, effective interface.

## IPMI Protocol Analyzer

VT053 can be used as an IPMI protocol analyzer, Figure .

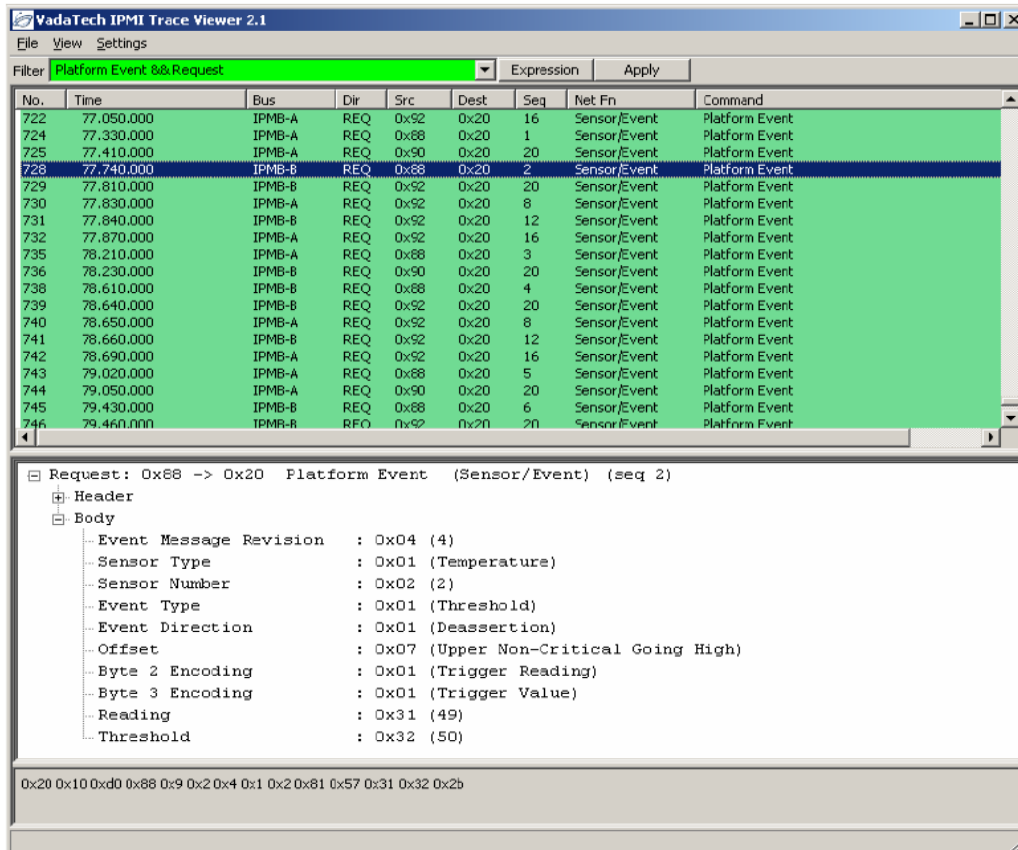


Figure 3: IPMI Protocol Analyzer Trace Viewer Output

# Specifications

Architecture	
<b>Physical</b>	<b>Dimensions</b> Width: 5.685" (144 mm)
	Depth 11.096" (281 mm)
<b>Type</b>	<b>Shelf Manager</b> VadaTech ATCA Shelf Manager
Standards	
<b>Module Management</b>	<b>IPMI</b> IPMI v2.0 and PICMG 3.0
Configuration	
<b>Power</b>	<b>VT053</b> 3W
<b>Environmental</b>	<b>Temperature</b> See <a href="#">Ordering Options</a>
	Storage Temperature: -40° to +90°C
	<b>Vibration</b> Operating 9.8 m/s <sup>2</sup> (1G), 5 to 500 Hz on each axis
	<b>Shock</b> Operating 30G each axis
	<b>Relative Humidity</b> 5 to 95% non-condensing
<b>Front Panel</b>	<b>Interface Connectors</b> Micro DB15 connector for Telco Alarm
	RJ-45 for RS-232 port
	Single 10/100 out of band port support to the shelf manager
	<b>LEDs</b> IPMI management control
	Activity/Link user LEDs
	<b>Mechanical</b> Hot-swap ejector handle
	Cap-screw
	<b>Push Button</b> Alarm reset and system reset
<b>Software Support</b>	<b>Operating System</b> Linux (consult factory for VxWorks, Windows, or other options)
Other	
<b>MTBF</b>	MIL Hand book 217-F@ TBD hrs
<b>Certifications</b>	Designed to meet FCC, CE and UL certifications, where applicable
<b>Standards</b>	VadaTech is certified to both the ISO9001:2015 and AS9100D standards
<b>Warranty</b>	Two (2) years, see <a href="#">VadaTech Terms and Conditions</a>

## INTEGRATION SERVICES AND APPLICATION-READY PLATFORMS

VadaTech has a full ecosystem of OpenVPX, ATCA and MTCA products including chassis platforms, shelf managers, AMC modules, Switch and Payload Boards, Rear Transition Modules (RTMs), Power Modules, and more. The company also offers integration services as well as pre-configured Application-Ready Platforms. Please contact VadaTech Sales for more information.

# Ordering Options

VT053-000-000-0HJ

		<b>H = Temperature Range</b> 0 = Commercial (Operating Temperature -5° to 65°C) 1 = Industrial
		<b>J = Conformal Coating</b> 0 = No coating 1 = Humiseal 1A33 Polyurethane 2 = Humiseal 1B31 Acrylic

## Related Products

VT011



- Shelf manager for AdvancedTCA systems
- Utilizing Gen 3 Shelf Manager VT003
- Option to plug into ATC139 ATCA Carrier

VT030



- 10GbE Switching Shelf Manager, eliminates need for separate switch slots
- Compliant to PICMG 3.0 base specs
- Compliant to PICMG 3.1 fabric specs

VT031



- Switching Shelf Manager (SSM) – 40G
- Compliant to PICMG 3.0 base specs
- Compliant to PICMG 3.1 fabric specs

# Contact

## VadaTech Corporate Office

198 N. Gibson Road, Henderson, NV 89014

Phone: +1 702 896-3337 | Fax: +1 702 896-0332

## Asia Pacific Sales Office

7 Floor, No. 2, Wenhua Street, Neihu District, Taipei 114, Taiwan

Phone: +886-2-2627-7655 | Fax: +886-2-2627-7792

## VadaTech European Sales Office

VadaTech House, Bulls Copse Road, Southampton, SO40 9LR

Phone: +44 2380 016403

[info@vadatech.com](mailto:info@vadatech.com) | [www.vadatech.com](http://www.vadatech.com)

# Choose VadaTech

## We are technology leaders

- First-to-market silicon
- Constant innovation
- Open systems expertise

## We commit to our customers

- Partnerships power innovation
- Collaborative approach
- Mutual success

## We deliver complexity

- Complete signal chain
- System management
- Configurable solutions

## We manufacture in-house

- Agile production
- Accelerated deployment
- AS9100 accredited



**vadatech**  
THE POWER OF VISION

## Trademarks and Disclaimer

The VadaTech logo is a registered trademark of VadaTech, Inc. Other registered trademarks are the property of their respective owners. AdvancedTCA™ and the AdvancedMC™ logo are trademarks of the PCI Industrial Computers Manufacturers Group. All rights reserved. Specification subject to change without notice.

© 2019 VadaTech Incorporated. All rights reserved.  
DOC NO. 4FM737-12 REV 01 | VERSION 1.1 – JUN/24